

# GOLDAIR

## Operating Instructions

### 30CM Desk Fan



Item: GCDF131

# General care and safety guide

**Thank you for choosing this GOLDAIR Fan. This GOLDAIR appliance has been designed and manufactured to high standards of engineering and with proper use and care, as described in this leaflet, will give you years of useful service. Please read these instructions carefully and keep them for future reference.**

## **ALWAYS**

- ✓ Use only the voltage specified on the rating plate of the appliance.
- ✓ Keep all objects at least 1 Metre from the front, sides and rear of the appliance
- ✓ This appliance is intended for household use only and not for commercial or industrial use.
- ✓ Use this appliance only as described in this manual. Any other use is not recommended by the manufacturer and may cause fire, electric shock or injury.
- ✓ The common cause of overheating is deposits of dust or fluff in the appliance. Ensure these deposits are removed regularly by unplugging the appliance and vacuum cleaning the air vents and grills.
- ✓ Always unplug appliance when not in use.
- ✓ When the appliance has been unpacked, check if for transport damage and ensure all parts have been delivered. If parts are missing or the appliance has been damaged, contact the Goldair Customer Services Team.
- ✓ If your appliance does not work, or is not working properly, contact the place of purchase. Repair work on the appliance by unqualified persons can cause serious risk to the user.
- ✓ Ensure hands are dry before handling the plug or the Fan.
- ✓ Carry out regular checks of the supply cord to ensure no damage is evident.

## **ALWAYS**

- ✓ Children should be supervised to ensure that they do not play with the appliance.
- ✓ Ensure that the cord is fully extended (not coiled) while in use.
- ✓ Avoid contact with the moving parts. Keep hands, hair, clothing, away from blade of the Fan during operation to reduce the risk of injury to person and/or damage to the Fan.
- ✓ Switch off and use handles provided when moving.

## **NEVER**

- × Never Place appliance close to radiant heat source.
- × Never Operate in areas where petrol, paint or other flammable liquids are used or stored.
- × Never Use the appliance to dry clothes.
- × Never Insert or allow foreign objects to enter any ventilation or exhaust opening, as this may cause an electric shock, fire or damage to the appliance.
- × Never use abrasive cleaning products on this appliance. Clean with a damp cloth (not wet) rinsed in hot soapy water only. Always remove plug from the mains supply before cleaning.
- × Never connect the appliance to mains supply until completely assembled and adjusted.
- × Never Remove plug from power socket until the appliance has been switched off.
- × Never Remove plug from power socket by pulling cord – always grip plug.
- × Never Twist, kink or wrap the cord around the appliance, as this may cause the insulation to weaken and split. Always ensure that all cord has been removed from any cord storage area and is unrolled before use.

**Continued Over Leaf**

# General care and safety guide

## NEVER

- × Never use this appliance in the immediate surrounds of a bath, a shower, or a swimming pool or other liquids. The appliance must not be immersed in any liquids.
- × Due to the risk of injury, never use this appliance for any purpose other than its intended use. This appliance is intended for use in household and similar applications such as staff kitchen areas in shops, offices and other working environments; farm houses, by clients in hotels, motels and other residential type environments, bed and breakfast type environments
- × Never use this appliance outdoors.
- × The use of an extension cord, power board, or external timer is not recommended with this unit.
- × Never operate the appliance with a damaged cord or plug, after it malfunctions, or if it has been damaged in any manner. Have the appliance checked and repaired by a qualified electrician if repair is necessary. If the supply cord is damaged, it must be replaced by the manufacturer, its service agent or similarly qualified persons in order to avoid a hazard.
- × This appliance is not intended for use by persons (including children) with reduced physical, sensory or mental capabilities or lack of experience and knowledge, unless they are supervised or have been given instruction concerning the use of the Fan by a person responsible for their safety.
- × Never touch blades while the machine is plugged in.

## Cleaning

To avoid risk of electric shock, before cleaning, you **MUST ALWAYS** switch off and unplug the Fan before cleaning.

Use only a soft, damp cloth to gently wipe the Fan and dry well.

**DO NOT** immerse the Fan in water and never allow water to enter the motor housing.

**DO NOT** use harsh chemicals to clean the Fan.

### **TECHNICAL SPECIFICATION**

Model No: GCDF131

Power Supply: 220V-240V / 50Hz

Power: 40W

# GOLDAIR

SUPPORT AND TECHNICAL ADVICE

PO Box 100707, NSMC, Auckland, New Zealand

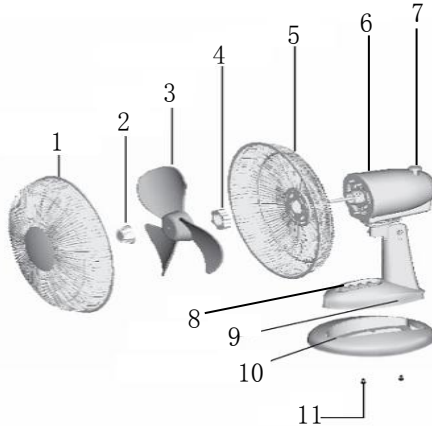
Monday – Friday 8am-5pm

Phone: 0800 232 633

Website: [www.goldair.co.nz](http://www.goldair.co.nz)

# Components

1. Front Guard
2. Spinner
3. Fan blade
4. Guard mounting
5. Rear guard



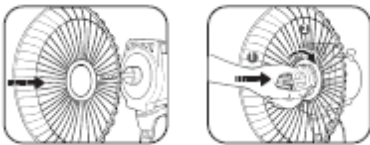
6. Motor housing
7. Oscillation Knob
8. Switch Button
9. Locking lug
10. Base surround
11. Screws

## Operating your Fan

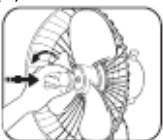
### Assembly

The moulded base surround is supplied with 3 retaining screws (in a small bag taped to the inside of the surround). Remove the bag containing the screws and position the surround on the moulded retaining clips on the base and snap into place. Ensure that the surround has clipped firmly into position onto the fan base and screw the 3 retaining screws into the holes across the middle of the base. Do not over-tighten these screws.

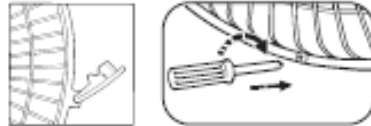
Take off guard lock nut (4) from motor shaft. Place the rear guard (5) on the front of the motor housing. Line up the lugs on the front of the motor housing with the holes in the rear guard. Screw on guard lock nut tightly to attach rear guard.



Place the fan blade (3) on the motor shaft and secure it by tightening the fan blade nut (2).



Fit the front guard (1) onto the rear guard and close the clips, then secure the grill with the small screw provided.



### Fan control switch

The control switch positions are:

- 0 = OFF
- 1 = Low Speed
- 2 = Medium Speed
- 3 = High Speed

Check that the Fan control switch is set to the off position before plugging into the mains supply.

Place the Fan on a dry, level and sturdy surface.

Plug the power cord into the socket, making sure the speed control is at OFF position.

To operate the fan push down speed control desired.

Adjust tilt by turning neck piece assembly (8) and tilting body to the desired wind direction (i.e. either upward or downward).

To activate the oscillation function, push down the oscillation pin (7) on the top of the motor. The fan will then oscillate until the pin is pulled back up.

# GOLDAIR

## One year Warranty

Your Goldair product has been inspected and tested and is guaranteed subject to the following for a period to One year from the date of purchase against defects in workmanship and materials. During this period, such defects will be rectified by repair or replacement of the product purchased. Your product contains no user serviceable components and this Warranty becomes invalid if in our opinion the product has been misused, abused, incorrectly installed, tampered with, connected to an electrical supply not corresponding with the name plate specification, or subjected to power surges. The Warranty does not include any labour or other associated expense that may be involved in removal or installation of the product. Normal wear and tear is expressly excluded.

If your Goldair product fails to operate satisfactorily, please return it to the retailer from whom it was purchased. To obtain a repair or replacement product under this Warranty, you will need to produce satisfactory evidence of date of purchase. The completed Warranty and purchase receipt must be presented with the product. The Warranty should be filled out at the time of purchase. It is in your interest to make sure this is done.

If the product is to be replaced (cannot be repaired) then that replacement will be of the same or similar product or accessory excluding packaging, instruction card etc. Where a replacement product is supplied, this shall be guaranteed for the balance of the original Warranty period.

Any model that is no longer available will be replaced by a model of a value and with such features as we consider appropriate in the circumstances. Goldair Ltd is not responsible for freight forwarding charges, losses or damage in transit.

If service is required after the Warranty period has expired, the product should be returned to a qualified electrical technician. Service outside of the Warranty period will be at your cost.

Consumers Guarantee Act (1993).

In accordance with the above act consumers are advised that: The manufacturer does not undertake that repair facilities and parts are necessarily available for this product.

If any of the provisions of the foregoing are contrary to any relevant legislation, then that provision shall be deemed to be excluded from the Warranty and the rest of the provisions will continue to apply.

### IMPORTANT: Please retain this Warranty card

Name ..... Purchased from .....

Address ..... Date of purchase .....

..... Name of product .....

Suburb ..... Model no .....